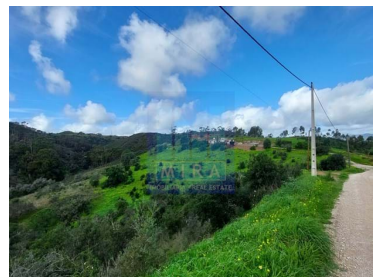




## Silves - Farmhouse



3

Bedrooms



2

Bathrooms



358

Area (m<sup>2</sup>)



48672

Land Area (m<sup>2</sup>)

**500 000 €**

(EUR €)

### Farm with 4.8 ha in Silves with river view

Farm in Silves with beautiful panoramic views over the mountains and the Arade river in the landscape. Farm with housing to demolish and design new housing, plus an existing ruin on the land. Located in the Odelouca area, it offers a lot of privacy and tranquility. The terrain is mountainous, but there are moderate parts of arable land. The water comes from a well and there is the possibility of drilling an artesian well. The distance to the beach is 25 minutes and the city of Silves is 12 minutes away. The property has 358 m<sup>2</sup> of urban area, 88 m<sup>2</sup> of which is declared a ruin. Solar and south orientation. Lot with 48,672 m<sup>2</sup>.



**Bartolomeu Mira**

mira.algarve@gmail.com

T +351 968075501 <sup>2</sup> · T +351 282441351 <sup>1</sup> · E mira.algarve@gmail.com

Silves - Vale da Lama - Casa do Canal - 8300-052 Silves

AMI 17664

<sup>1</sup> (Call to national fixed network) | <sup>2</sup> (Call to national mobile network)



1680  
Reference

Scan the QR code to view the property



## Property Features

- Built year: 1951
- Views: Countryside views, Mountain views, River view
- Solar orientation: South
- Floors: 1
- Well
- Orientation: Exterior



**Bartolomeu Mira**

[mira.algarve@gmail.com](mailto:mira.algarve@gmail.com)

**T +351 968075501 <sup>2</sup> · T +351 282441351 <sup>1</sup> · E [mira.algarve@gmail.com](mailto:mira.algarve@gmail.com)  
Silves - Vale da Lama - Casa do Canal - 8300-052Silves  
AMI 17664**

<sup>1</sup> (Call to national fixed network) | <sup>2</sup> (Call to national mobile network)